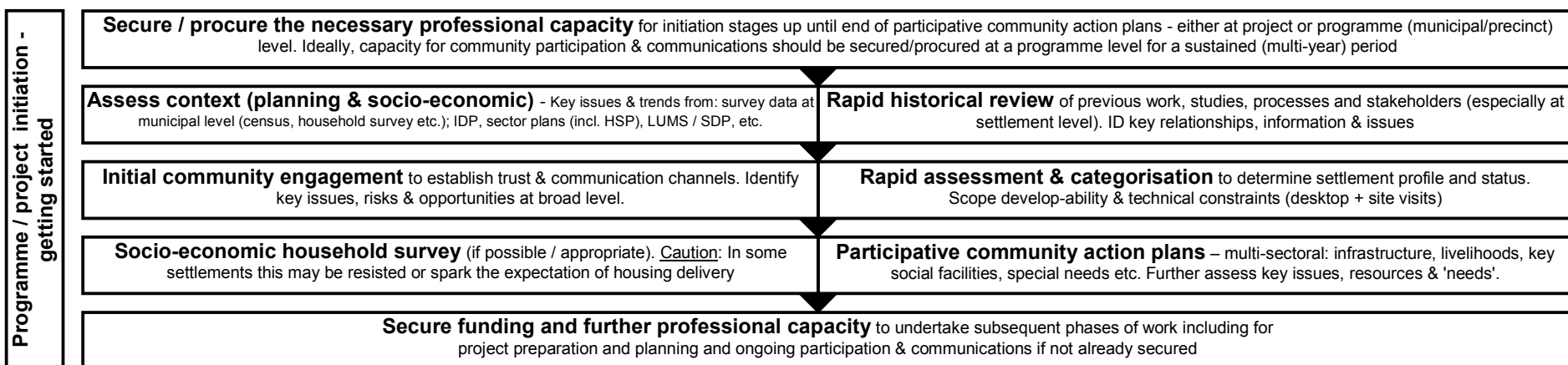


Informal Settlement Improvement, Inclusion, Transformation & Urban Management Overall Summary Framework & Process



Expedite rapid responses & vulnerability mitigation					
	Plan, design & deliver either interim or emergency basic services (e.g. water, sanitation, access, fire protection, solid waste removal). Possible preliminary layout & proactive emergency housing.	Special needs response plans e.g. home based care, child headed households, HIV prevention & treatment	Support for livelihoods & informal enterprise - including food security / gardens	Basic / functional tenure (e.g. administrative settlement recognition)	Participative LED plan - based on engagement with local informal and formal enterprise
TIME	ST	ST	ST	ST	ST
SCALE	settlement	settlement	settlement	settlement	settlement
COST	moderate	moderate	low	low	low
GRANT	EH / USDG / USIP	Mun / DoSD / DOH	Mun, DED	UISP	Mun / DED
GOVT	Mun	Mun, DoSD, DOH	Mun, DED	Mun	Mun

Address spatial / precinct level development			
Key social facilities assessment & investment / response plan (e.g. primary health, education etc)	Precinct level master plans (road hierarchy, activity centres, key social facilities etc)	Land identification & assessment (for possible full upgrading / relocation / green-fields dev / incr. dev. area)	Land acquisition (for possible full upgrading / relocation / green-fields dev / incr. dev. area)
ST/MT	ST/MT	ST/MT	MT/LT
precinct	precinct	settlement	settlement
moderate	low	low	moderate to high
Mun, DE, DOH	Mun / UISP	Mun / UISP	Mun / UISP
Mun, DoSD, DOH	Mun	Mun, DoHS	Mun, DoHS

Where and when appropriate - formalisation			
Relocation / resettlement - Last resort (e.g. green-fields housing / incremental development area)	Permanent tenure solution (not necessarily a title)	Permanent services & township establishment including planning / EIA approvals etc	Housing delivery (preferably med. density) including 'self-help' housing
MT/LT	MT/LT	MT/LT	MT/LT
settlement	settlement	settlement	settlement
moderate to high	moderate to high	high	high
UISP	UISP	UISP	UISP
Mun, DoSD, Health	Mun	Mun, DoHS	Mun, DoHS

Abbreviations			
ST = 6 – 18 months	DED = Department of Economic Development	DoSD = Department of Social Development	EH = Emergency Housing
MT = 1 – 2 years	DE = Department of Education	UISP = Upgrading Informal Settlement Programme DoHS	DoHS = Department of Human Settlements
LT = 2 - 10 years	DOH = Department of Health	USDG = Urban Settlement Development Grant	Mun = Municipality